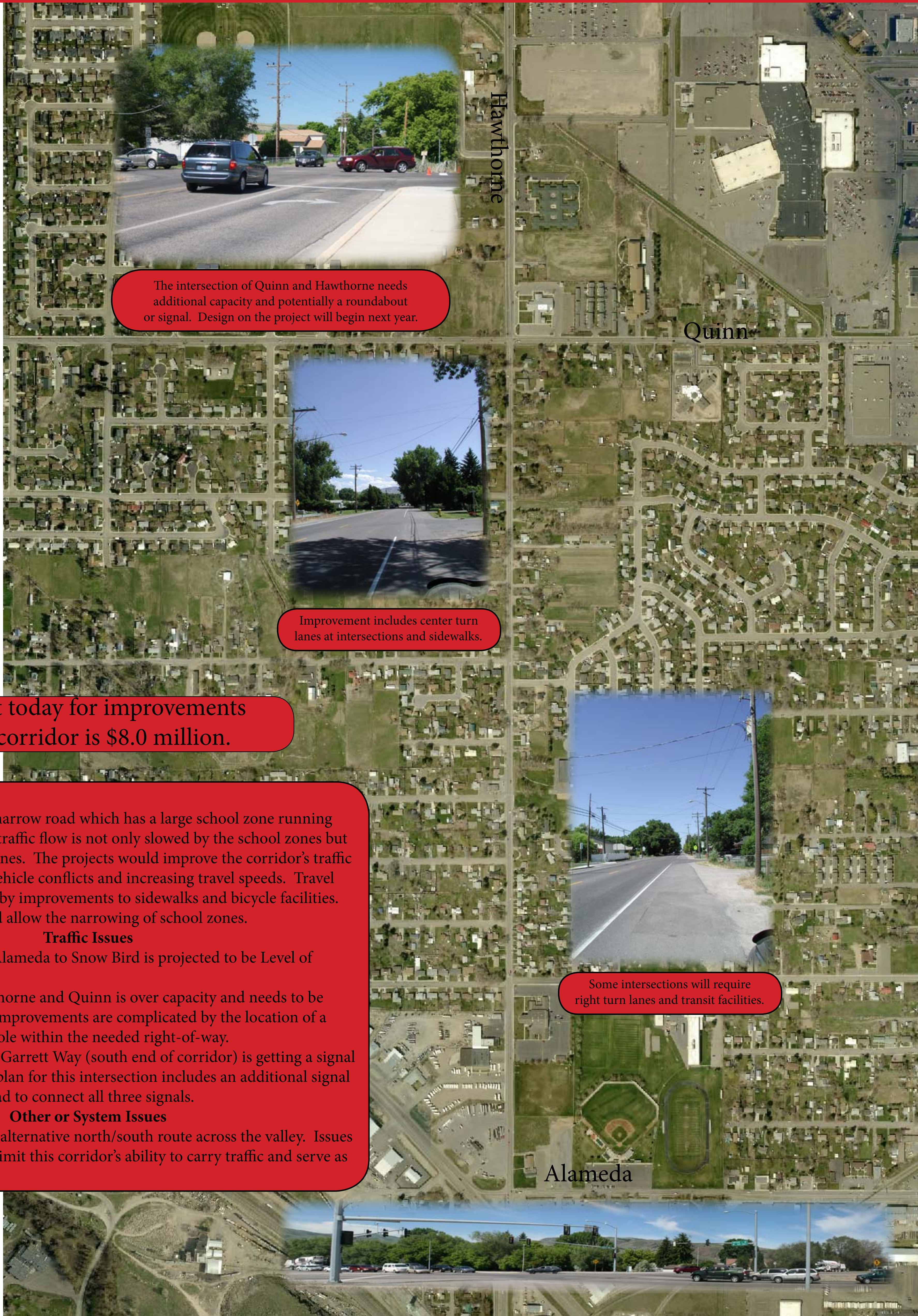


# Hawthorne Corridor



The intersection of Quinn and Hawthorne needs additional capacity and potentially a roundabout or signal. Design on the project will begin next year.

Improvement includes center turn lanes at intersections and sidewalks.

Total cost today for improvements on the corridor is \$8.0 million.

Hawthorne Corridor is a narrow road which has a large school zone running from Main to Quinn. The traffic flow is not only slowed by the school zones but there is a lack of turning lanes. The projects would improve the corridor's traffic flow by reducing turning vehicle conflicts and increasing travel speeds. Travel speeds would be increased by improvements to sidewalks and bicycle facilities. These improvements would allow the narrowing of school zones.

#### Traffic Issues

- Hawthorne Road from Alameda to Snow Bird is projected to be Level of Service F in 2035.
- The intersection of Hawthorne and Quinn is over capacity and needs to be signalized. Intersection improvements are complicated by the location of a canal and major power pole within the needed right-of-way.
- Intersection of Main and Garrett Way (south end of corridor) is getting a signal in 2010. The long range plan for this intersection includes an additional signal and addition of a new road to connect all three signals.

#### Other or System Issues

- This route is the primary alternative north/south route across the valley. Issues with speed and capacity limit this corridor's ability to carry traffic and serve as a major route.

Some intersections will require right turn lanes and transit facilities.

Alameda